



# ABS Labour Force Results – August 2022

The data in this summary are sourced from ABS, Labour Force, Australia, August 2022 and are in seasonally adjusted terms (unless stated otherwise). Note that changes in the tables are calculated from more detailed data and may not match changes calculated manually from the figures presented in the text.

**Table 1: Key national labour market statistics**

	Aug-22	Jul-22	Change over the month	Mar-20	Change since Mar-20	Aug-21	Change over the year
<b>Total employment ('000)</b>	13,592.1	13,558.6	33.5	13,002.2	589.8 (4.5%)	13,021.8	570.3 (4.4%)
Full-time employment ('000)	9,468.5	9,409.7	58.8	8,869.0	599.6 (6.8%)	8,953.3	515.3 (5.8%)
Part-time employment ('000)	4,123.6	4,148.9	-25.3	4,133.3	-9.7 (-0.2%)	4,068.5	55.0 (1.4%)
Total unemployment ('000)	487.7	473.6	14.0	719.4	-231.7 (-32.2%)	620.2	-132.5 (-21.4%)
Unemployment rate (%)	3.5	3.4	0.1 pts	5.2	-1.8 pts	4.5	-1.1 pts
Participation rate (%)	66.6	66.4	0.2 pts	65.9	0.7 pts	65.2	1.4 pts
Total underemployment ('000)	832.7	840.0	-7.2	1,208.4	-375.6 (-31.1%)	1,265.0	-432.2 (-34.2%)
Underemployment rate (%)	5.9	6.0	-0.1 pts	8.8	-2.9 pts	9.3	-3.4 pts
Monthly hours worked in all jobs (million hours)	1,854.4	1,839.9	14.5	1,769.4	85.0 (4.8%)	1,718.1	136.3 (7.9%)
Annual employment growth rate (%)	4.4 (1.8 decade avg)	3.0 (1.8 decade avg)	1.3 pts	1.7 (1.8 decade avg)	2.6 pts	3.1 (1.5 decade avg)	1.2 pts
Annual full-time employment growth rate (%)	5.8 (1.7 decade avg)	4.4 (1.7 decade avg)	1.4 pts	1.0 (1.5 decade avg)	4.7 pts	4.3 (1.3 decade avg)	1.4 pts
Annual part-time employment growth rate (%)	1.4 (2.0 decade avg)	0.1 (2.1 decade avg)	1.2 pts	3.3 (2.3 decade avg)	-1.9 pts	0.6 (2.0 decade avg)	0.7 pts
<b>Female employment ('000)</b>	6,482.8	6,463.8	19.0	6,163.2	319.6 (5.2%)	6,168.9	314.0 (5.1%)
Female full-time employment ('000)	3,675.8	3,631.9	43.9	3,340.2	335.5 (10.0%)	3,411.7	264.1 (7.7%)
Female part-time employment ('000)	2,807.1	2,831.9	-24.9	2,823.0	-15.9 (-0.6%)	2,757.1	49.9 (1.8%)
Female unemployment ('000)	231.4	224.9	6.5	334.5	-103.1 (-30.8%)	284.6	-53.2 (-18.7%)
Female unemployment rate (%)	3.4	3.4	0.1 pts	5.1	-1.7 pts	4.4	-1.0 pts
Female participation rate (%)	62.3	62.2	0.2 pts	61.2	1.1 pts	60.6	1.8 pts
Female underemployment ('000)	477.7	487.2	-9.5	687.6	-209.8 (-30.5%)	651.6	-173.9 (-26.7%)
Female underemployment rate (%)	7.1	7.3	-0.2 pts	10.6	-3.5 pts	10.1	-3.0 pts
<b>Male employment ('000)</b>	7,109.2	7,094.8	14.4	6,839.0	270.2 (4.0%)	6,852.9	256.3 (3.7%)
Male full-time employment ('000)	5,792.8	5,777.8	14.9	5,528.7	264.0 (4.8%)	5,541.6	251.2 (4.5%)
Male part-time employment ('000)	1,316.5	1,317.0	-0.5	1,310.3	6.2 (0.5%)	1,311.4	5.1 (0.4%)
Male unemployment ('000)	256.2	248.7	7.6	384.8	-128.6 (-33.4%)	335.6	-79.4 (-23.6%)
Male unemployment rate (%)	3.5	3.4	0.1 pts	5.3	-1.8 pts	4.7	-1.2 pts
Male participation rate (%)	71.0	70.8	0.2 pts	70.7	0.3 pts	70.1	0.9 pts
Male underemployment ('000)	355.0	352.8	2.2	520.8	-165.8 (-31.8%)	613.3	-258.4 (-42.1%)
Male underemployment rate (%)	4.8	4.8	0.0 pts	7.2	-2.4 pts	8.5	-3.7 pts
<b>Youth employment ('000)</b>	2,022.6	2,059.0	-36.4	1,934.7	87.9 (4.5%)	1,863.5	159.1 (8.5%)
Youth full-time employment ('000)	913.8	902.4	11.5	845.2	68.6 (8.1%)	816.9	96.9 (11.9%)
Youth part-time employment ('000)	1,108.8	1,155.4	-46.6	1,090.2	18.6 (1.7%)	1,045.8	63.0 (6.0%)
Youth unemployment ('000)	186.1	155.6	30.5	255.0	-68.8 (-27.0%)	214.4	-28.3 (-13.2%)
Youth unemployment rate (%)	8.4	7.0	1.4 pts	11.6	-3.2 pts	10.3	-1.9 pts
Youth participation rate (%)	71.5	71.7	-0.2 pts	68.3	3.2 pts	67.1	4.4 pts
Youth underemployment ('000)	274.0	311.0	-37.0	427.1	-153.1 (-35.9%)	355.6	-81.6 (-23.0%)
Youth underemployment rate (%)	12.4	14.1	-1.6 pts	19.5	-7.0 pts	17.1	-4.7 pts

## OVERVIEW

Seasonally adjusted **employment** increased by 33,500 (or 0.2%) over the month, to 13,592,100 in August 2022. Employment is now 589,800 (or 4.5%) above the level recorded in March 2020 (the month that Australia recorded its 100th COVID-19 case).

**Full-time employment** rose by 58,800 (or 0.6%) in August, to 9,468,500, while **part-time employment** decreased, by 25,300 (or 0.6%), to 4,123,600.

**Hours worked** increased by 14.5 million hours in August, to 1,854.4 million hours, and is 85.0 million hours (or 4.8%) above the level recorded in March 2020.

The **unemployment rate** rose by 0.1 percentage points over the month, to 3.5% in August 2022.

The **underemployment rate** decreased by 0.1 percentage points, to 5.9% in August 2022, and is well below the 8.8% recorded in March 2020.

The **participation rate** increased from 66.4% in July 2022, to 66.6% in August 2022, and is well above the 65.9% recorded in March 2020.

## EMPLOYMENT

**Employment** rose by 33,500 (or 0.2%) over the month, to 13,592,100 in August 2022, and is 589,800 (or 4.5%) above the level recorded in March 2020.

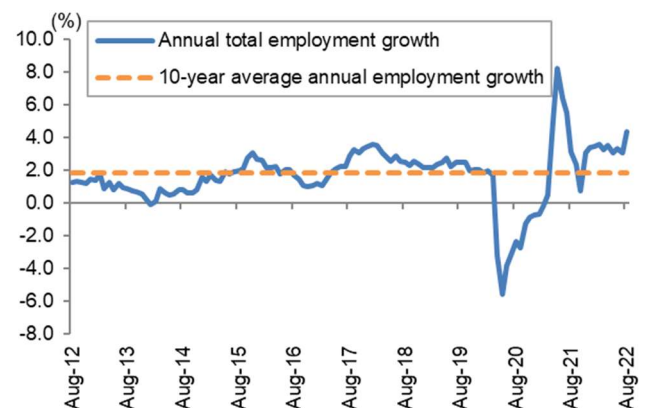
- **Full-time employment** increased by 58,800 (or 0.6%) in August, to 9,468,500, and is 599,600 (or 6.8%) above the level recorded in March 2020.
- **Part-time employment** fell by 25,300 (or 0.6%) over the month, to 4,123,600 in August 2022, and is now 9,700 (or 0.2%) below the level recorded in March 2020.

**Female employment** rose by 19,000 (or 0.3%) over the month, to 6,482,800 in August 2022, and is 319,600 (or 5.2%) above the level recorded in March 2020.

**Male employment** increased by 14,400 (or 0.2%) over the month, to 7,109,200 in August 2022, and is 270,200 (or 4.0%) above the level recorded in March 2020.

The **employment to population (15 years and over) ratio** rose by 0.1 percentage points over the month, to 64.3% in August 2022, and is well above the 62.4% recorded in March 2020.

**Chart 1: Annual employment growth (%)**

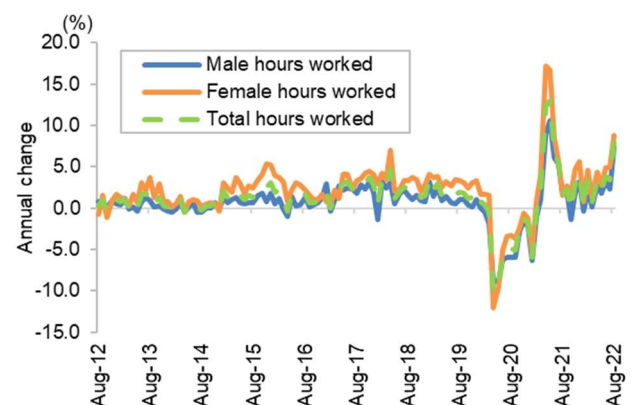


## HOURS WORKED

The number of **monthly hours worked in all jobs** rose by 14.5 million hours over the month (or 0.8%), to 1,854.4 million hours in August 2022. Since March 2020, the number of monthly hours worked in all jobs has risen by 85.0 million hours (or 4.8%).

The number of people who were employed but worked reduced or zero hours due to 'own illness, injury or sick leave' rose by 11,000 (or 1.5%) over the month, to 761,000 in August 2022, and is well above the average level recorded in August over the previous 8 years (of 500,500).

**Chart 2: Annual change in hours worked by gender (%)**



**Male hours worked** increased by 14.3 million hours (or 1.4%) in August, to 1,073.3 million hours, and is 40.6 million hours (or 3.9%) above the level recorded in March 2020.

**Female hours worked** rose by 0.2 million hours over the month, to 781.1 million hours in August 2022, and is 44.4 million hours (or 6.0%) above the level recorded in March 2020.

## UNDEREMPLOYMENT

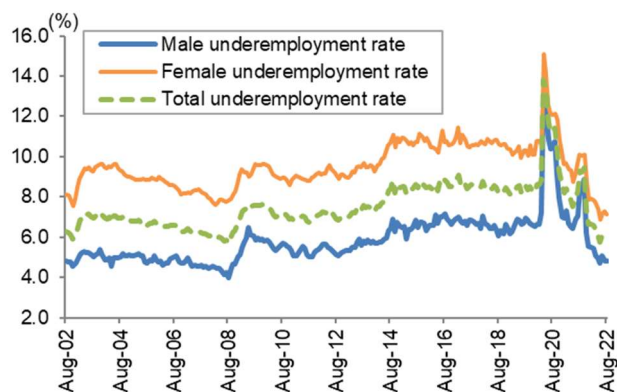
The level of **underemployment** decreased by 7,200 (or 0.9%) over the month, to 832,700 in August 2022, and is 375,600 (or 31.1%) below the level recorded in March 2020.

The **underemployment rate** decreased by 0.1 percentage points over the month, to 5.9% in August 2022, and is well below the 8.8% recorded in March 2020.

The **male underemployment rate** was steady over the month, at 4.8% in August 2022, and is well below the 7.2% recorded in March 2020.

The **female underemployment rate** fell by 0.2 percentage points over the month, to 7.1% in August 2022, and is well below the 10.6% recorded in March 2020.

**Chart 3: Underemployment rate by gender (%)**



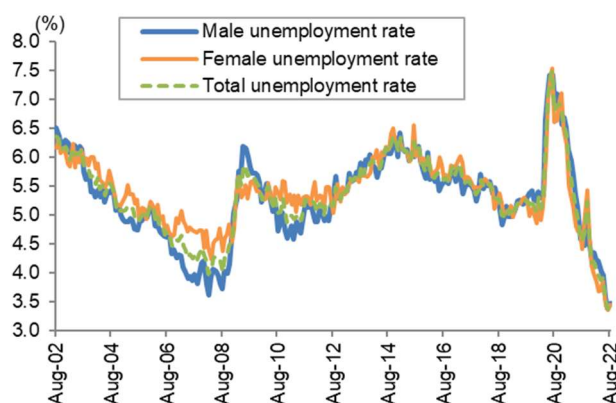
## UNEMPLOYMENT

**Unemployment** rose by 14,000 (or 3.0%) over the month, to 487,700 in August 2022, but remains 231,700 (or 32.2%) below the level recorded in March 2020.

The **unemployment rate** increased by 0.1 percentage points over the month, to 3.5% in August 2022, but remains well below the 5.2% recorded in March 2020.

The **female unemployment rate** was 3.4% in August and has not been lower than this since November 1973 (when it was 3.3%). The **male unemployment rate** increased by 0.1 percentage points over the month, to 3.5% in August 2022, but remains well below the 5.3% recorded in March 2020.

**Chart 4: Unemployment rate by gender (%)**



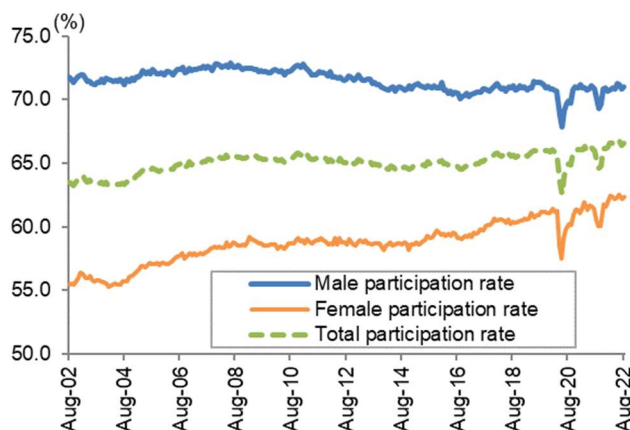
## PARTICIPATION

The **labour force participation rate** increased by 0.2 percentage points over the month, to 66.6% in August 2022, and is above the 65.9% recorded in March 2020.

The **female participation rate** increased from 62.2% in July 2022, to 62.3% in August 2022, and is well above the 61.2% recorded in March 2020.

The **male participation rate** increased by 0.2 percentage points over the month, to 71.0% in August 2022, and is 0.3 percentage points above the rate recorded in March 2020.

**Chart 5: Participation rate by gender (%)**



## YOUTH (15-24 YEARS)

The level of **youth employment** fell by 36,400 (or 1.8%) over the month, to 2,022,600 in August 2022, but remains 87,900 (or 4.5%) above the level recorded in March 2020.

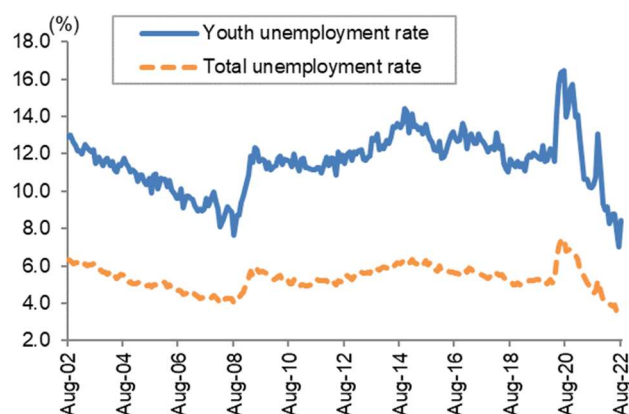
The **youth unemployment rate** increased by 1.4 percentage points over the month, to 8.4% in August 2022, but remains well below the 11.6% recorded in March 2020.

The **youth participation rate** fell from 71.7% in July, to 71.5% in August 2022, but remains 3.2 percentage points above the rate recorded in March 2020.

The **youth underemployment rate** fell from 14.1% in July 2022, to 12.4% in August 2022, the lowest

rate recorded since November 2008 and well below the 19.5% recorded in March 2020.

**Chart 6: Youth and total unemployment rate (%)**



## STATES AND TERRITORIES

**Table 2: Key labour market indicators by state and territory**

	Employment ('000)					Unemployment rate (%)			Participation rate (%)		
	Aug-22	Monthly change	Change since Mar-20	Mar-20	Jul-22	Aug-22	Mar-20	Jul-22	Aug-22		
New South Wales	4,278.8	4.1 0.1%	151.9 3.7%	4.9	3.3	3.4	65.4	65.8	66.0		
Victoria	3,525.2	-0.8 0.0%	81.7 2.4%	5.2	3.1	3.7	66.4	66.6	67.0		
Queensland	2,775.4	1.4 0.0%	214.7 8.4%	5.8	3.8	3.2	65.5	67.0	66.5		
South Australia	893.5	10.2 1.2%	34.9 4.1%	6.3	4.0	3.9	63.0	62.5	63.1		
Western Australia	1,471.5	0.9 0.1%	92.4 6.7%	5.6	3.2	3.1	68.3	69.4	69.3		
Tasmania	264.1	-0.2 -0.1%	5.9 2.3%	5.0	3.7	4.9	61.0	60.6	61.3		
Northern Territory	135.3	1.3 1.0%	-0.5 -0.3%	5.1	3.5	4.5	75.7	72.6	73.6		
Australian Capital Territory	236.8	3.4 1.5%	-2.3 -1.0%	3.2	3.3	2.7	72.2	70.3	70.9		
<b>Australia</b>	<b>13,592.1</b>	<b>33.5 0.2%</b>	<b>589.8 4.5%</b>	<b>5.2</b>	<b>3.4</b>	<b>3.5</b>	<b>65.9</b>	<b>66.4</b>	<b>66.6</b>		

Data are in *seasonally adjusted* terms.

Six of the states and territories recorded an increase in **employment** in August 2022, with South Australia recording the largest increase (of 10,200 or 1.2%), followed by the New South Wales (up by 4,100 or 0.1%).

- Employment was at a record high in South Australia in August 2022.

Victoria recorded the largest decrease in employment over the month (of 800), followed by Tasmania (down by 200 or 0.1%).

Employment is above pre-pandemic levels in all states. Since March 2020, Queensland has recorded the largest increase in employment (up by 214,700 or 8.4%), followed by New South Wales (up by 151,900 or 3.7%).

Tasmania recorded the highest **unemployment rate** of all the states and territories in August 2022 (of 4.9%), while the Australian Capital Territory recorded the lowest rate, of 2.7% in August 2022.

- The unemployment rate in Queensland (of 3.2%), and South Australia (3.9%) have not been lower since the inception of the monthly series in February 1978.

The Northern Territory recorded the highest **participation rate**, of 73.6% in August 2022, while Tasmania recorded the lowest participation rate, of 61.3%.

**Table 3: Youth unemployment rate by state and territory**

Youth unemployment rate (%)					
	Mar-20	Jul-22	Aug-22	Monthly change (% pts)	Change since March 2020 (% pts)
New South Wales	10.5	8.7	8.5	-0.2	-1.9
Victoria	10.7	9.9	9.9	0.0	-0.8
Queensland	14.5	9.7	9.5	-0.2	-5.0
South Australia	13.8	9.5	9.4	0.0	-4.4
Western Australia	13.2	9.0	8.9	-0.2	-4.4
Tasmania	12.5	10.1	10.3	0.1	-2.2
Northern Territory	12.6	8.7	8.9	0.2	-3.7
Australian Capital Territory	8.2	8.2	8.1	-0.1	-0.1
<b>Australia</b>	<b>11.6</b>	<b>7.0</b>	<b>8.4</b>	<b>1.4</b>	<b>-3.2</b>

Data for the states and territories are 12-month averages of *original* estimates, while the data for Australia are in *seasonally adjusted* terms.