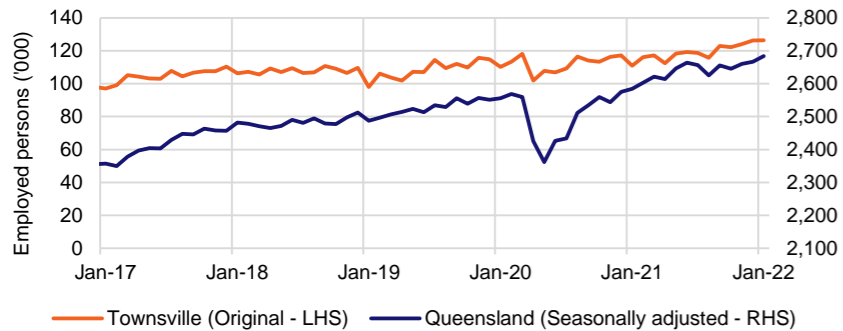


Labour market summary table												
	Employment			Unemployment			Unemployment rate		Participation rate		Youth unemployment rate	
	Jan-22 ('000)	Mar-20 ('000)	Change (%)	Jan-22 ('000)	Mar-20 ('000)	Change (%)	Jan-22 (%)	Mar-20 (%)	Jan-22 (%)	Mar-20 (%)	Jan-22 (%)	Mar-20 (%)
Townsville	126.4	118.3	6.9	5.2	6.3	-18.5	3.9	5.1	69.9	66.7	6.3	16.5
Queensland	2,684.0	2,559.7	4.9	122.2	157.1	-22.2	4.4	5.8	66.4	65.5	10.4	14.6
Australia	13,255.0	12,995.5	2.0	580.0	723.2	-19.8	4.2	5.3	66.2	65.9	9.0	11.6

Source: ABS, Labour Force Survey, Jan-22. Employment Region data are original estimates, except for the youth unemployment rate, which is a 12-month average of original estimates. State youth unemployment rates are original estimates. Remaining data are seasonally adjusted.

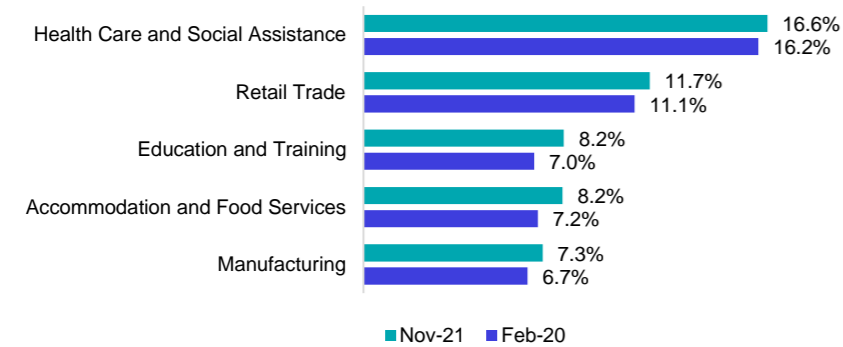
This Labour Market Data Dashboard provides key indicators for the labour market by Employment Region and is updated monthly.

**Employed persons**



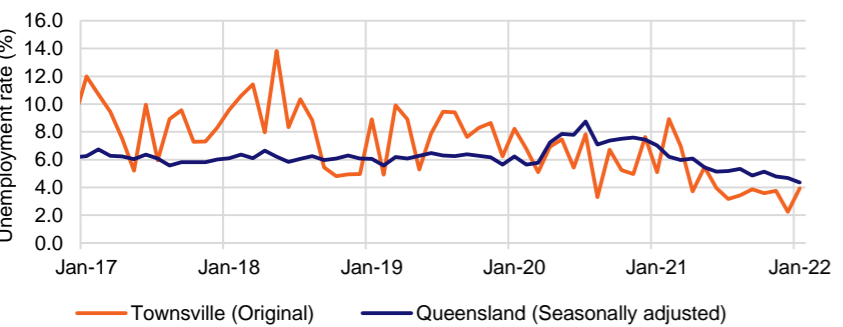
Source: ABS, Labour Force Survey, Jan-22

**Largest employing industries**



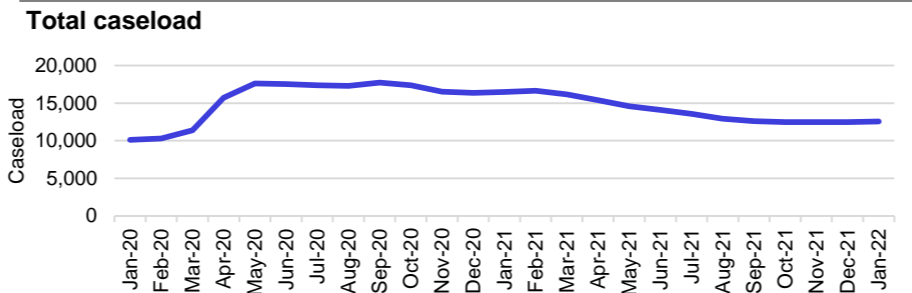
Source: ABS, Labour Force Survey, Detailed, four quarter averages, Nov-21 quarter

**Unemployment rate**



Source: ABS, Labour Force Survey, Jan-22

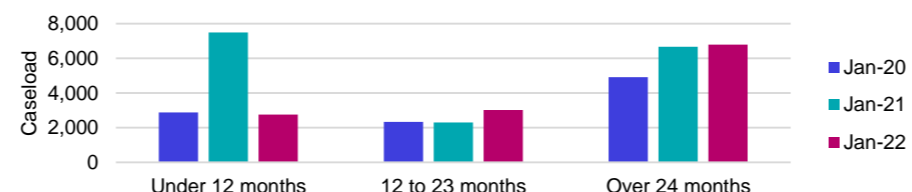
**jobactive caseload**



**Change in jobactive services caseload**

	Townsville	Queensland
Caseload - Feb 2020	10,303	154,263
Caseload - Jan 2022	12,559	201,544
Change from Feb 2020 to Jan 2022	2,256 (↑ 22%)	47,281 (↑ 31%)

**jobactive caseload by duration registered**



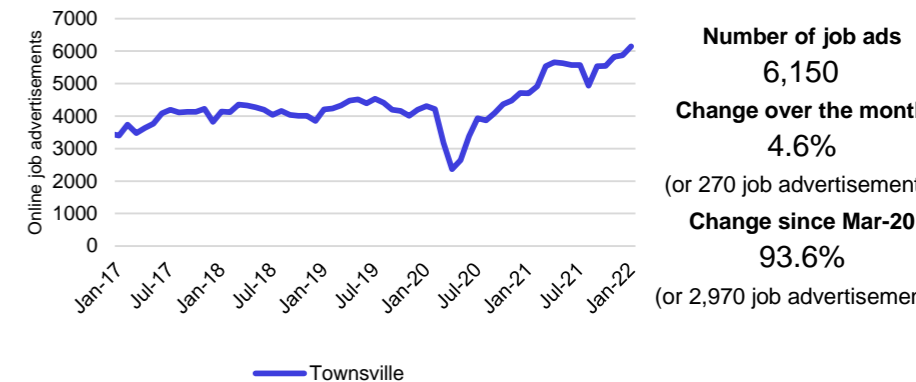
Source: Department of Education, Skills and Employment, caseload data, Jan-22

**LGAs with highest unemployment rates (%)**

Local Government Area (LGA)	Sep-21	Sep-20
Mount Isa (C)	8.2	7.5
Charters Towers (R)	5.4	7.5
Hinchinbrook (S)	5.2	7.0
Townsville (C)	5.1	6.5
Burdekin (S)	4.6	5.9

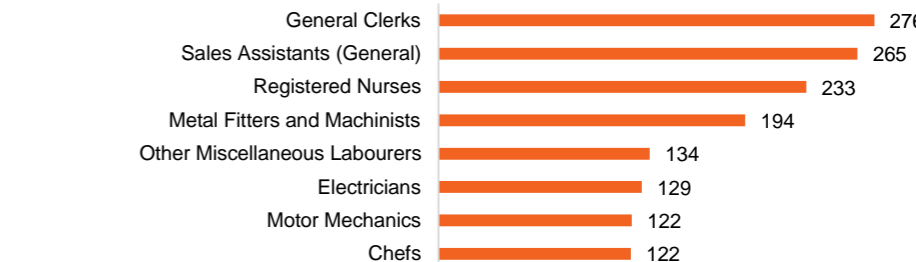
For more insights, access SALM data via [Impip.gov.au](http://Impip.gov.au). Source: National Skills Commission, Small Area Labour Markets, four quarter averages, Sep-21 quarter

**Online job advertisements**



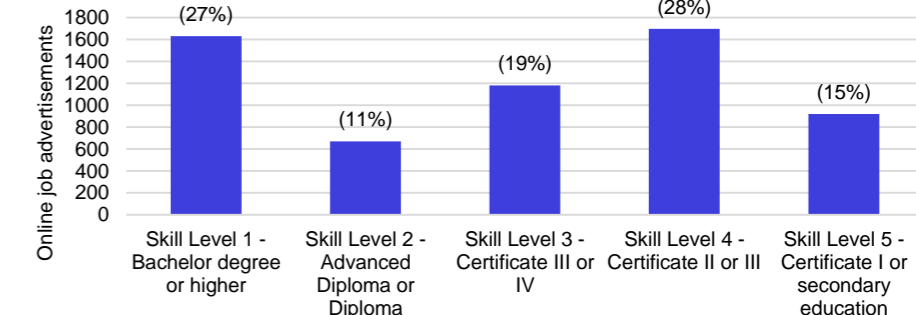
Source: National Skills Commission, Internet Vacancy Index, seasonally adjusted, Jan-22

**Online job advertisements by occupation**



Source: National Skills Commission, Internet Vacancy Index, 3 month average of original data, Jan-22

**Online job advertisements by skill level**



Source: National Skills Commission, Internet Vacancy Index, seasonally adjusted, Jan-22

Note: Data are not readily available for all sources by Employment Region. ABS Labour Force Survey data are based on the Townsville SA4. The Internet Vacancy Index (IVI) uses a unique geographical approach. For this region, the IVI Far North Queensland region has been used. jobactive caseload reports at the Employment Region level and includes participants receiving both digital and provider servicing (it excludes other programs, such as ParentsNext or Transition to Work (TTW)). For caseload data, the Employment Region is based on (1) the location of the provider for jobactive provider serviced participants; (2) where the participant resides for Online Employment Services (OES) participants; (3) the NEST Employment Regions of Adelaide South or Mid North Coast for NEST participants. jobactive caseload by duration registered is based on the participant's time registered in employment services. Caseload data are based on current methodology which has been retrospectively applied to historical jobactive caseload dates. As such, the data may not align with earlier figures. For any enquiries related to the data in this dashboard, please contact [EmploymentPathwaysAnalysis@skillscommission.gov.au](mailto:EmploymentPathwaysAnalysis@skillscommission.gov.au).